



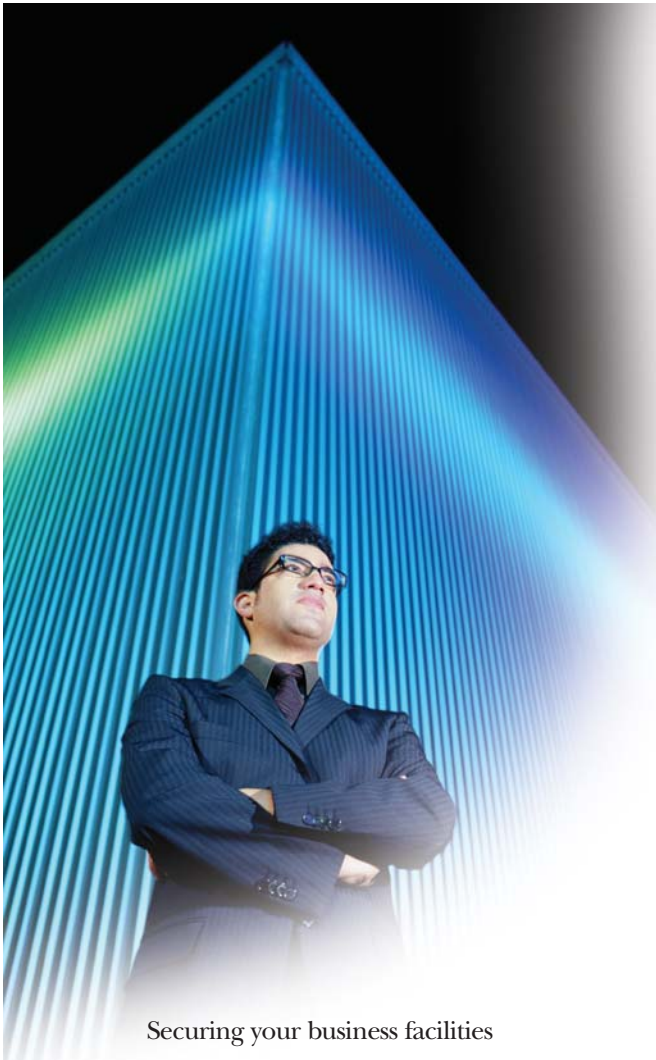
GE Security

Facility Commander™

Complete, Integrated Command and Control

V2-0





2.0 Facility Commander

Complete, integrated command and control

Securing your business facilities requires multiple systems, often from different manufacturers and deployed in several locations. Now you can manage them all from a single, intuitive interface with Facility Commander™ from GE Security.

Facility Commander gives you command and control over your company's access control systems, video surveillance, burglar alarms, and more. From a single Windows-like screen, you can integrate all your hardware and software into one easy-to-use system to protect your people, your property, and your bottom line.

Facility Commander works directly with GE's Picture Perfect™ and Secure Perfect® access control systems as well as digital video surveillance, alarm, and other systems from multiple manufacturers. See page 2

or visit www.ge-security.com for more information on Facility Commander drivers.

Facility Commander features an open architecture based on industry standards. It runs on commercial, off-the shelf operating systems including Windows, Linux, and AIX. And it supports popular databases like SQL, Informix, DB2, and Oracle. What's more, its available Software Development Kit (SDK) and open APIs allow third-party vendors to create their own drivers.

While other companies talk about integration, GE Facility Commander delivers.

Bring separate systems together

In the past, access control, surveillance, alarms and other security systems didn't work with each other. Hardware and software were incompatible. Databases were proprietary. And user interfaces were inconsistent.

The result? Too much money spent on multiple computers and displays. Too many people spending too much time trying to manage multiple systems. Along with the distractions of these systems clamoring for your staff's attention.

Facility Commander changes all that with response times and error rates that a human can't match, Facility Commander helps the operator get their job done when they need help most—during an incident.

With its standards-based open architecture and published APIs, Facility Commander brings all your systems together in a single console. Already, Facility Commander includes drivers from many leading security system vendors. Or you can use the Facility Commander SDK to develop a plug-and-play driver for your digital video equipment and software. That means in most cases you can continue to use your existing video surveillance system.



Take charge of your facilities



Facility Commander allows multiple system control through graphic maps. Doors, cameras, intrusion areas, and intercoms are all integrated into a single, overall system view.

Facility Commander gives you a single console for all access control, video surveillance and alarm management functions. Built-in drivers support GE's Picture Perfect and Secure Perfect access control systems, as well as analog CCTV switchers, intercom, and intrusion systems.

Facility Commander's integrated, intuitive interface reduces training time and costs as well as operator errors. It helps you respond more efficiently to serious security incidents. Plus, its central console allows fewer operators to manage more locations.

Facility Commander's console includes:

Access Control Interface

Facility Commander is closely integrated with GE's Picture Perfect and Secure Perfect products. Facility Commander integrates events and actions between your access control

and other security systems. For example, you can lock or unlock a door from a graphical map of door locations. In addition, if an access alarm is triggered, Facility Commander can map the location of the alarmed point and direct your surveillance system to begin recording at that location.

Digital Video Interface

Facility Commander works with digital video surveillance systems from GE as well as other manufacturers. From the Facility Commander console, you can view live images from your surveillance cameras, control Pan/Tilt/Zoom (PTZ) cameras or search for video clips stored on a Digital Video Recorder (DVR) by time, date, event, event type, camera or DVR. Comprehensive alarm management lets you define events, alarms and actions to help you respond more effectively. For example, when an event or alarm



is triggered, Facility Commander can tell the DVR to begin recording, display live video from a linked camera, map the alarm location and send an e-mail to your security manager.

Analog CCTV Switcher Interface

Facility Commander can work with your current video surveillance system even if it includes analog equipment. Facility Commander's graphic displays give you manual control over the analog CCTV switcher. With the Event Action Mapping function, for example, Facility Commander displays pre-defined events or alarmed cameras on an analog monitor.



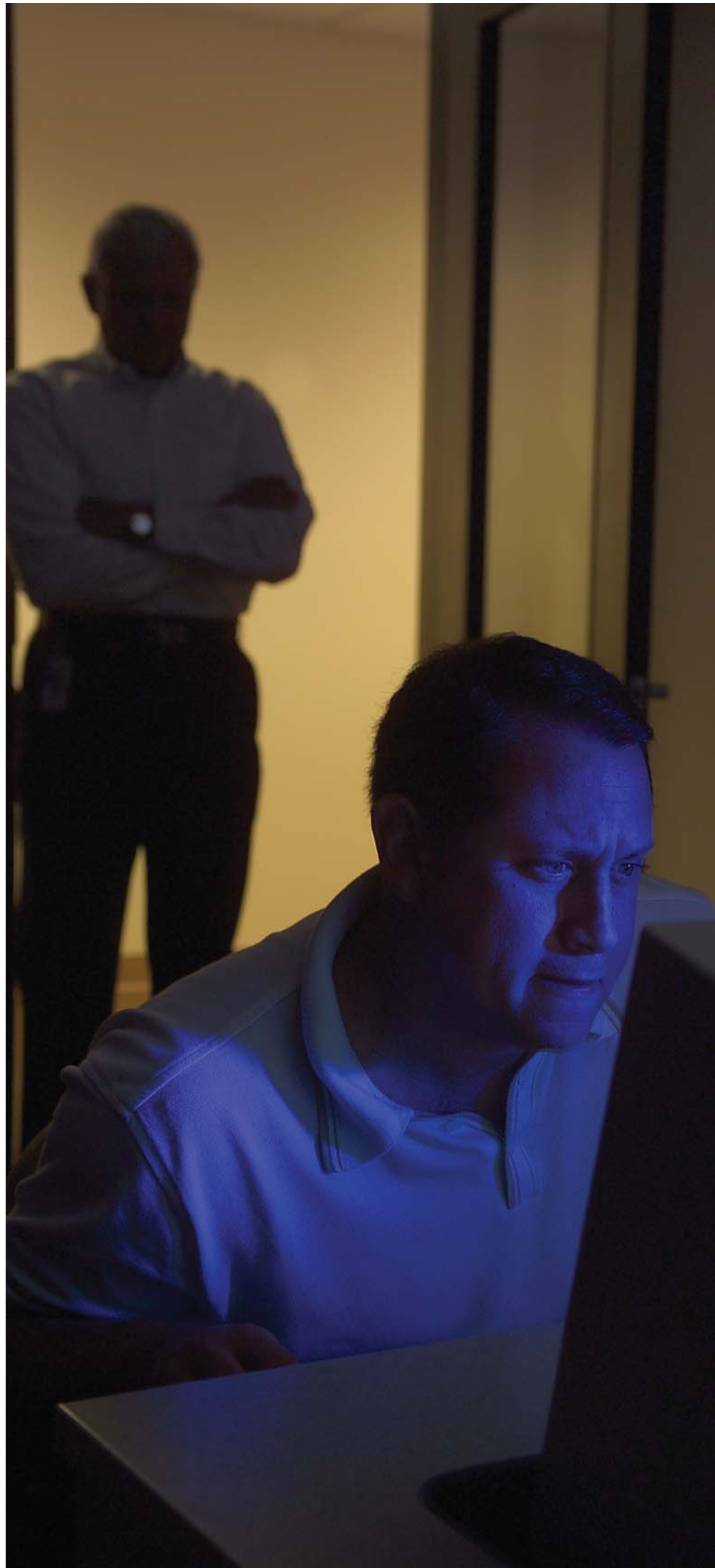
Facility Commander integrates graphic maps, live and recorded video, as well as an alarm monitor for operators.

Intrusion System Interface

Integrate your intrusion system into Facility Commander by identifying your intrusion panels, areas and inputs. These intrusion objects can then be placed on graphical maps. The intrusion areas can actually be freeform shapes, which use different fill characteristics to represent the different states (disarmed, armed and armed in alarm) of the intrusion area. From the Facility Commander console, you can also arm or disarm an intrusion area. When an event or alarm is triggered, Facility Commander's pop-up alarm function displays a map of the alarm location and links to your digital video system to begin recording at that location. You can also retrieve video clips associated with alarms to investigate and resolve incidents more quickly.

Intercom System Interface

When a call comes in over your intercom, Facility Commander can automatically trigger the Event Action Mapping function to display the intercom call station on the console. You can connect the intercom to your video system to show live video from that call station. You can also link the intercom to your access control system, for example, to unlock the door at that location.



Customize displays to fit your application

Facility Commander's hierarchical graphical display gives you the flexibility to configure what, where and how you see information on the console. You can display all your facilities or filter them to display a specific area such as an alarm location. You can watch both live and recorded video from a single camera or up to 16 cameras at once.

The video display includes controls for PTZ cameras as well as camera focus and iris settings. You can prioritize alarms, with automatic pop-up video displays, based on priority and workstation. And you can set up intrusion zones with control and status displays, All of which helps you manage your facilities and respond to incidents more effectively.

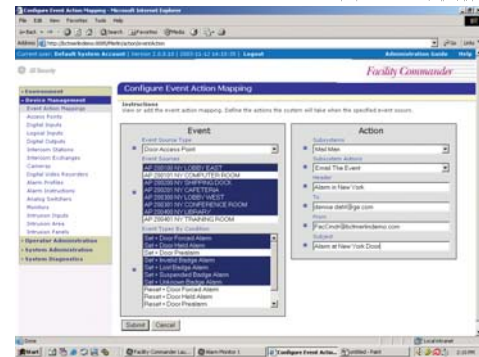
Facility Commander supports the .dxf file format, allowing you to import multilayered facility layouts from Computer-Aided Design (CAD) programs. You can then add easy-to-recognize icons to represent cameras, entry points and alarms throughout your facilities. From there you can click on an icon to link it to database objects such as alarms, events, cameras, intrusion areas, and access privileges.

Map actions and events

Facility Commander makes it easy to manage events throughout your facilities. Its Event Action Mapping function lets you configure single or multiple event sources and types, then specify actions that execute automatically when an event or events are triggered. And because Facility Commander integrates all of your security and facility management systems, it can execute actions that involve multiple components. For example, if an access control panel reads an invalid employee ID card, it can trigger an alarm on the console, begin recording video, activate the intercom at the panel location, and send an e-mail to your system administrator and human resources manager.

Manage multiple time zones

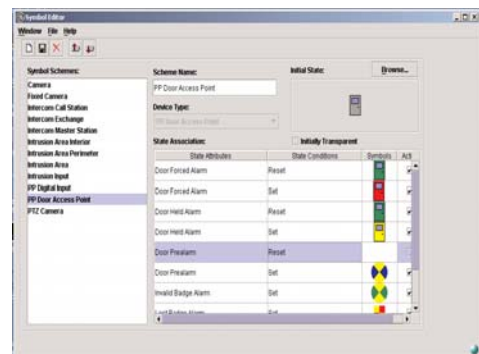
Because many facilities are spread out across multiple time zones, Facility Commander gives you multiple time display options for alarms and events. You can display any combination of local, device, or server time, as well as Greenwich Mean Time (GMT). That means you don't have to make time conversions when responding to or investigating an alarm or event.



The HTML-based Event Action Mapping form allows events from one system to be linked to actions on another system.



Display up to 16 video streams from multiple digital video sources of different manufacturers at once.



Facility Commander offers customizable symbol schemes to be used to alert operators to alarm events. Animated graphics are also supported.



Simplify integration with standards-based, open architecture

Facility Commander's open architecture makes it easier to integrate your security and facility systems. It is written in Java and uses non-proprietary industry standards and protocols. It also supports multiple platforms and databases, giving you the flexibility to adapt your system as your business grows and your facility requirements change.

Facility Commander supports:

Standard Technologies

- XML
- TCP/IP
- SNMP
- SMTP
- Secure Socket Layer (SSL)
- Java Media Framework (JMF)

Operating Systems

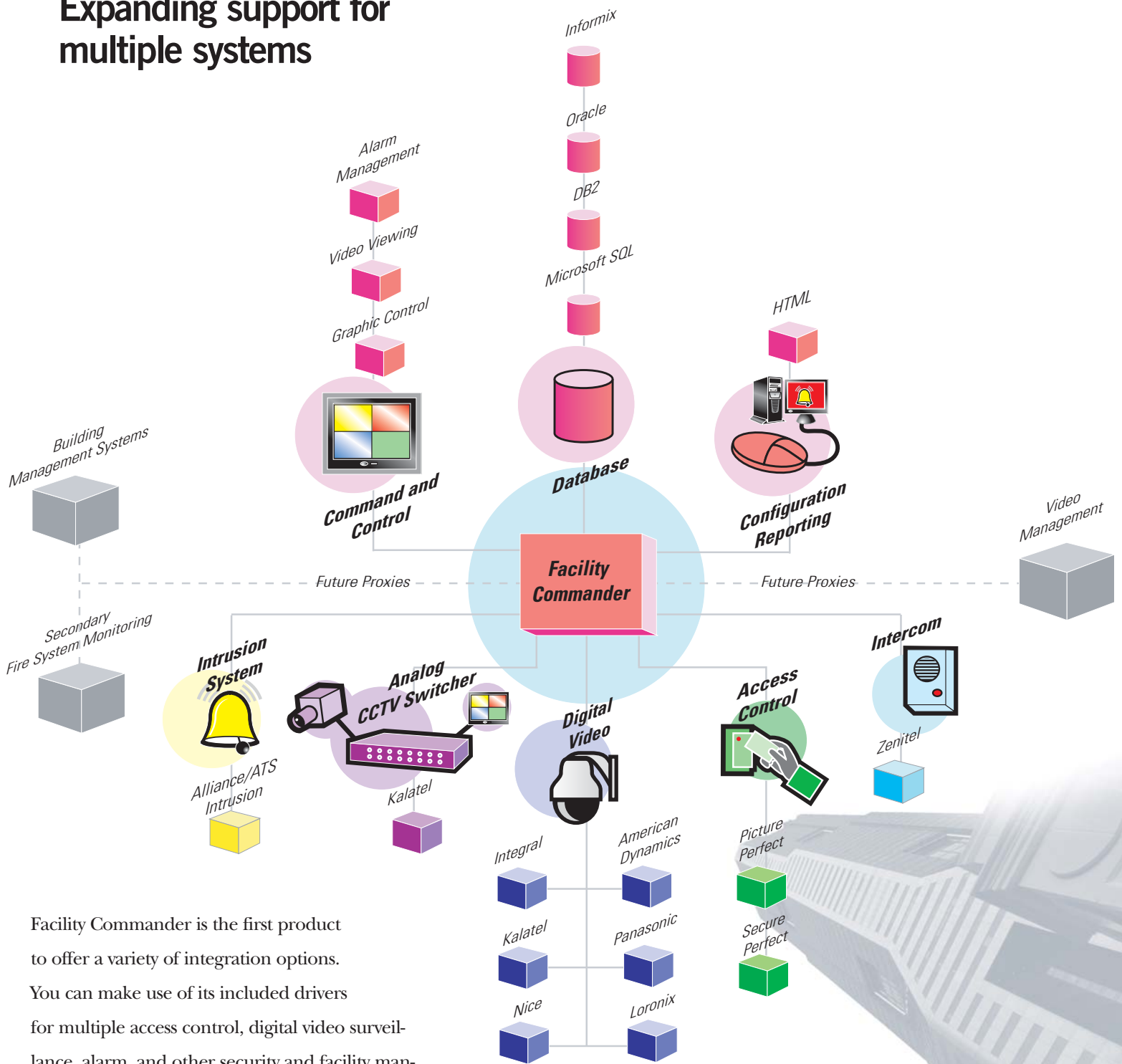
- Microsoft Windows 2000/XP
- Red Hat Linux 7.3
- IBM AIX 5.1

Databases

- Microsoft SQL 2000
- MSDE
- Informix
- IBM DB2 Universal Server
- Oracle



Expanding support for multiple systems




Facility Commander is the first product to offer a variety of integration options. You can make use of its included drivers for multiple access control, digital video surveillance, alarm, and other security and facility management systems. Or you can use the Facility Commander SDK and open APIs to develop plug-and-play drivers for your existing digital video equipment and software. What's more GE continues to work with third-party vendors to incorporate additional drivers into future Facility Commander releases for a complete set of evolving solutions.



About GE Security

GE Security is a global technology leader dedicated to helping customers protect their people, their property, their customers and their bottom line. We've been designing and manufacturing, access control, video surveillance, intrusion and fire detection, explosive and narcotics detection, key control, and fiber-optic transmission systems for more than 25 years. So if you have a need that isn't filled by one of our existing products, we can create a new one.

GE Security is a wholly owned subsidiary of GE. Like our parent company, we maintain a sharp focus on product and service innovation. When we create new technologies, or when we recognize the value of a technology created elsewhere, we begin building them into our products. When you choose GE, you can count on having the latest technology to create a secure environment.

imagination at work 



GE Security

*Enterprise Solutions
791 Park of Commerce Blvd., Suite 100
Boca Raton, FL 33487
561-998-6100 800-428-2733 Fax 561-994-6572
www.gesecurity.com*